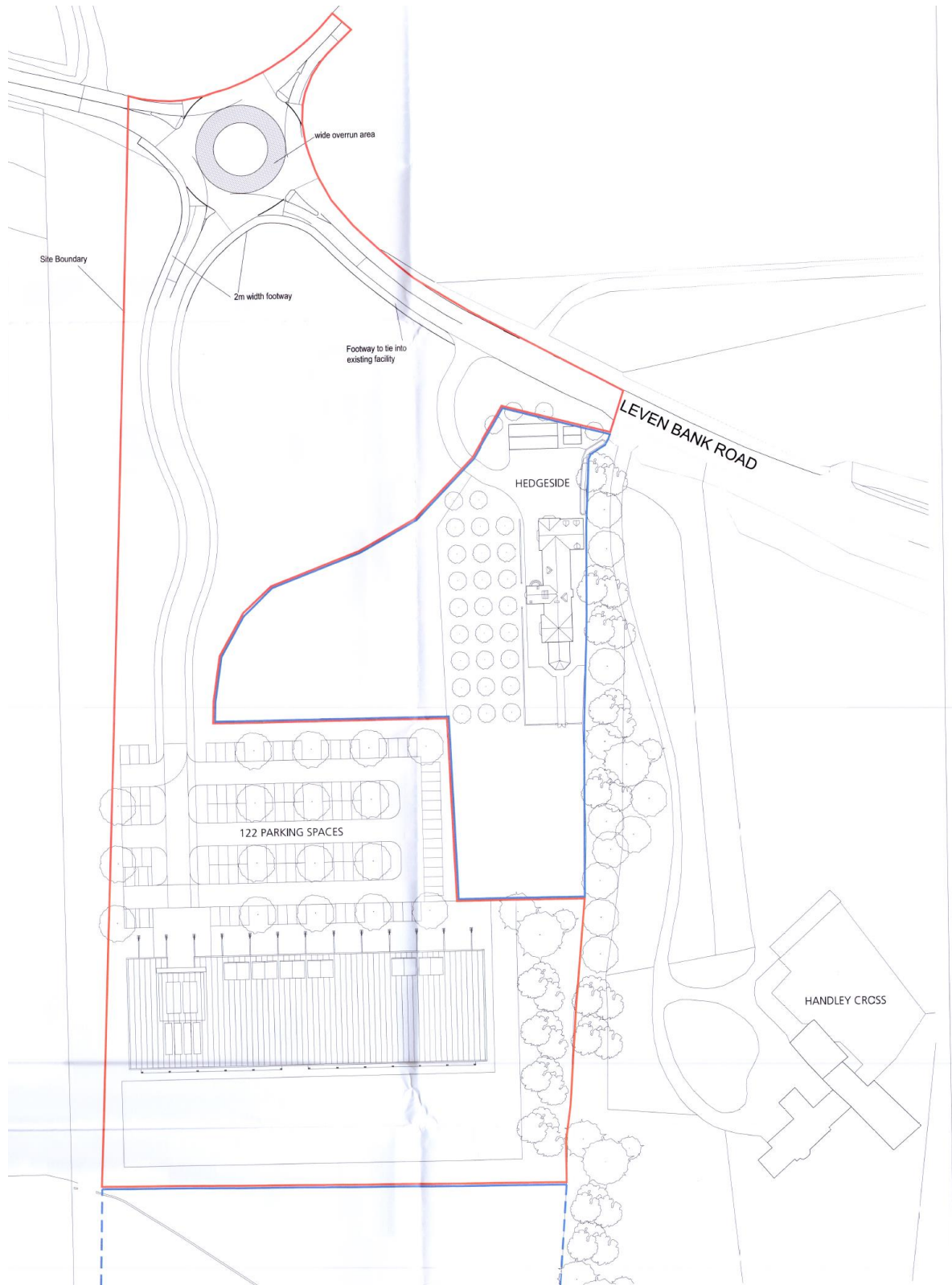


15/0527/OUT

Proposed country Club and Spa, Land adjacent to Hedgeside, Yarm

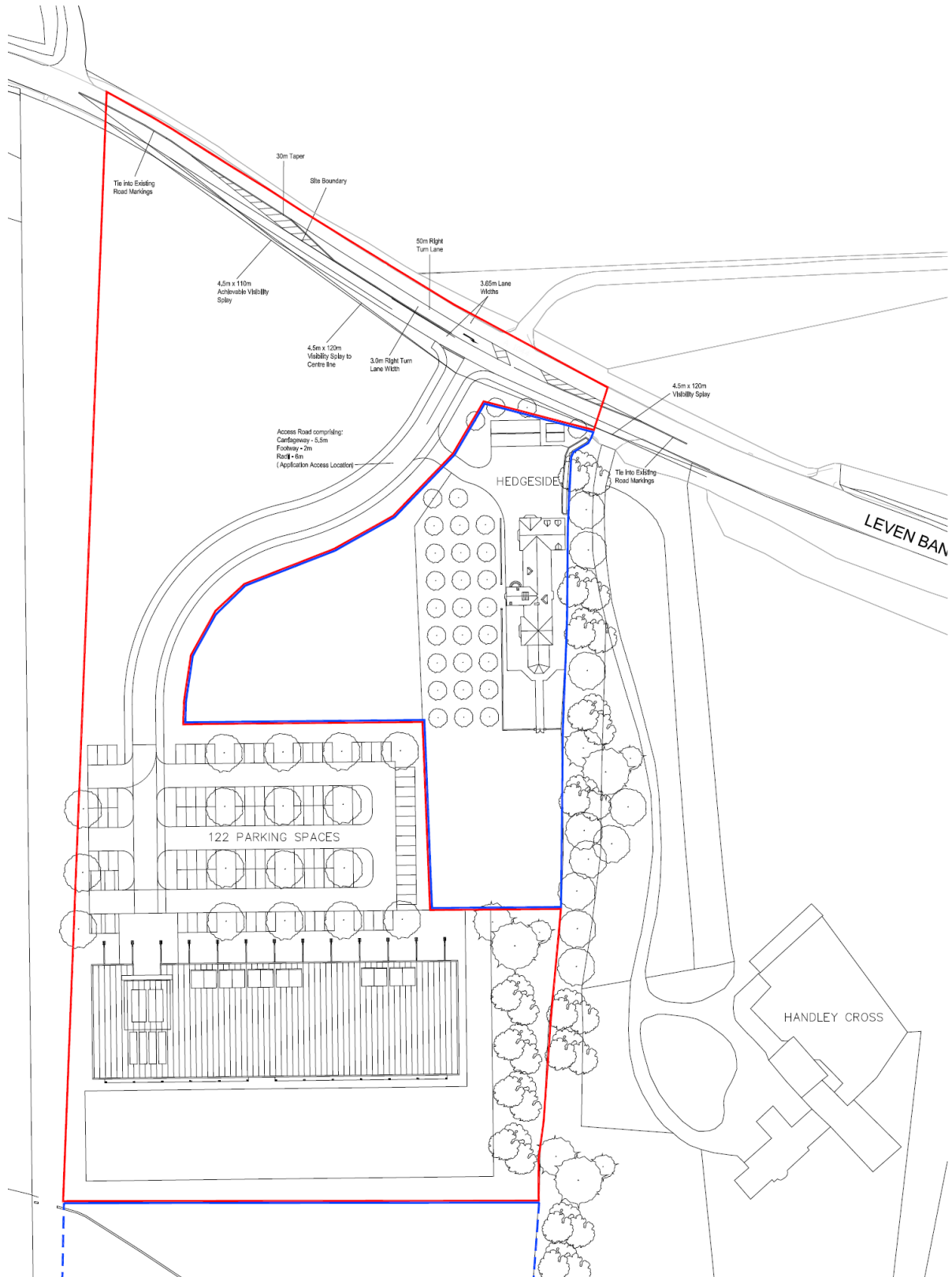
Appendix 1 - Site Location Plan and access option (roundabout)



15/0527/OUT

Proposed country Club and Spa, Land adjacent to Hedgeside, Yarm

Appendix 2 - Option access Arrangements (Protected turn)



15/0527/OUT

Proposed country Club and Spa, Land adjacent to Hedgeside, Yarm

Appendix 3 - Indicative Visualisations





15/0527/OUT

Proposed country Club and Spa, Land adjacent to Hedgeside, Yarm

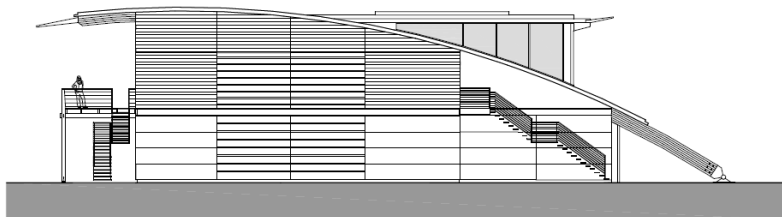
Appendix 4 - Indicative building elevations



North (entrance) elevation



South elevation



West elevation

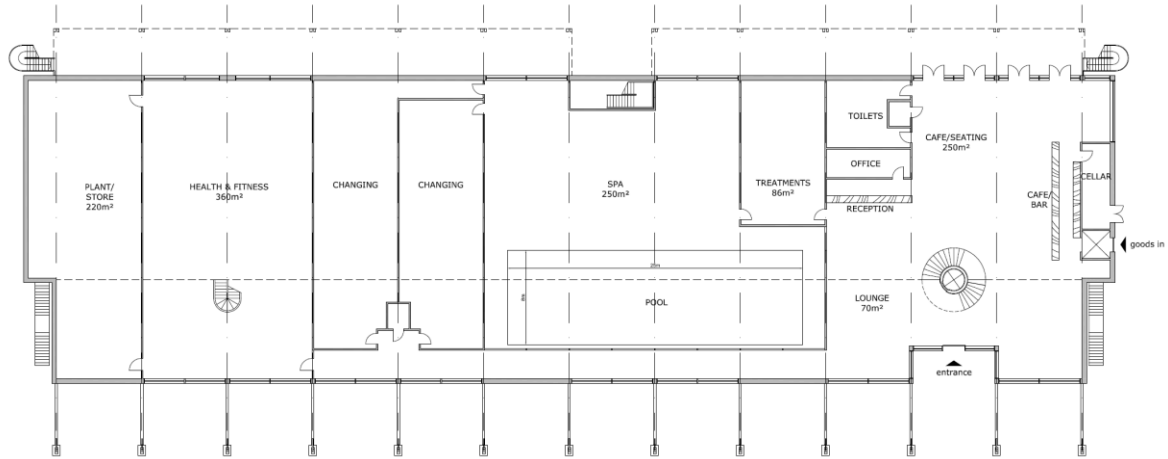


East elevation

15/0527/OUT

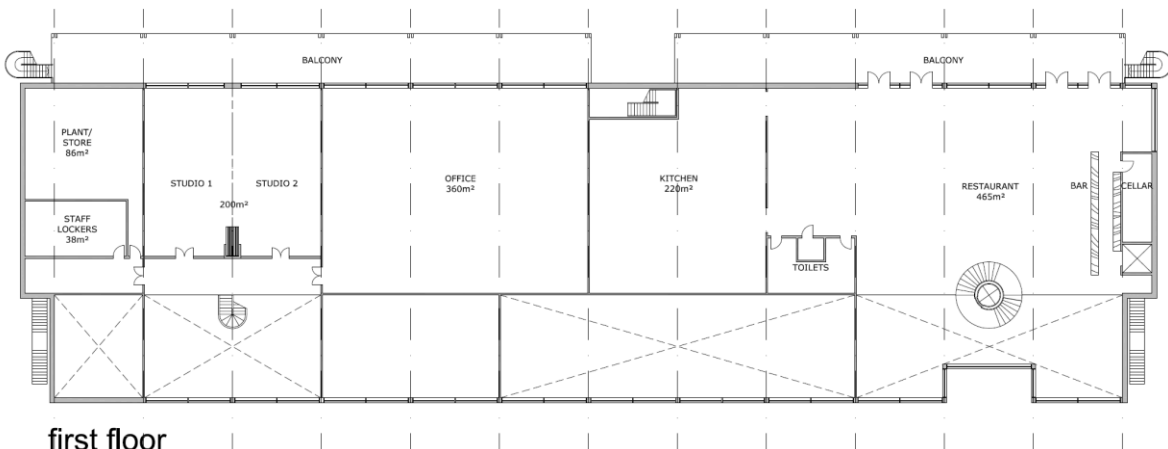
Proposed country Club and Spa, Land adjacent to Hedgeside, Yarm

Appendix 5 - Indicative Building floor plans



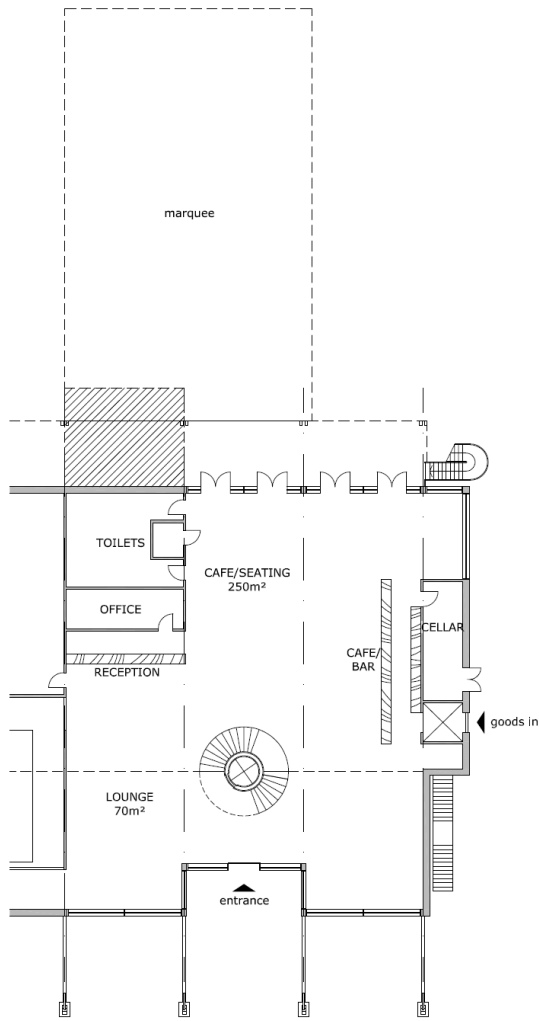
ground floor

Gross Internal 2250m²
Gross External 2347m²



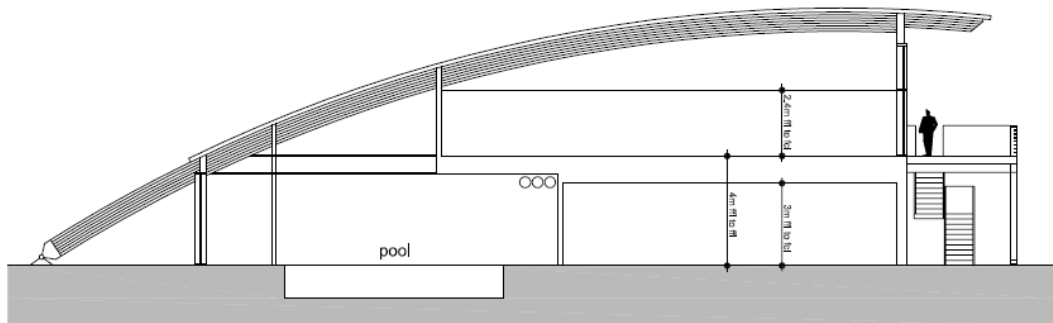
first floor

Gross Internal 1536m²
Gross External 1620m²



marquee location

show any secret office.



sketch section